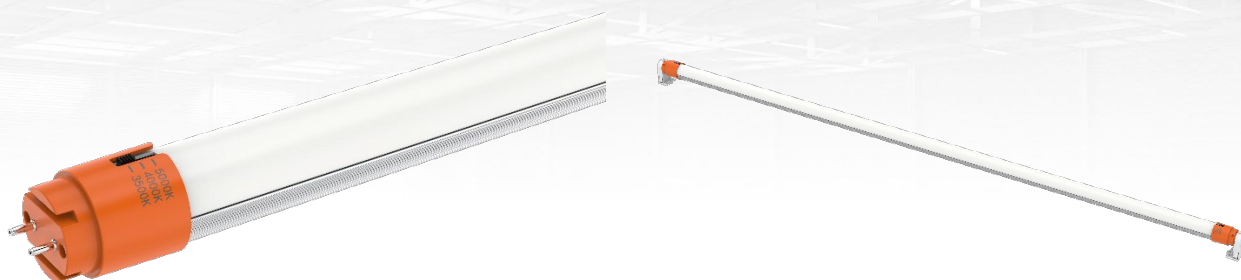




INDUSTRIAL AND COMMERCIAL
LIGHTING MFR SINCE 2003

PROJECT NAME _____
ITEM # _____
FIXTURE SCHEDULE _____
NOTES _____

Emergency LED Tube Series



WareLight's All-In-One Emergency LED Tube is a versatile and reliable lighting solution designed to replace traditional T8 and T12 lamps while providing an integrated emergency battery backup. This innovative tube ensures continuous illumination, offering peace of mind in both regular and emergency situations. Provides a minimum of 90 minutes of illumination during power outages, ensuring safety and visibility.

Specifications

CRI	80	Dimmable	0-10V
Light Source	LED	Lens	Frosted
Size	T10 4'	Lifespan	50,000hours (Normal lighting) 36,000hours (Emergency lighting)
End Cap	G13	Operating Temperature	0°-40°C
CCT	Selectable 35K/40K/50K	Housing	Oval extruded aluminum +polycarbonate
Wattage	Power - 15W Emergency - 2.5W	Voltage	120-277v
Voltage	120-277v	Ratings and Certifications	DLC, cULus, cETLus, NSF, RoHS
Lumens	Normal - 2,200 Emergency - 380	Warranty	5 Years (Normal lighting) 3 Years (Emergency lighting)

**Data is considered to be representative of the series. Actual production may vary between up to ±10% of initial delivered lumens.*





INDUSTRIAL AND COMMERCIAL
LIGHTING MFR SINCE 2003

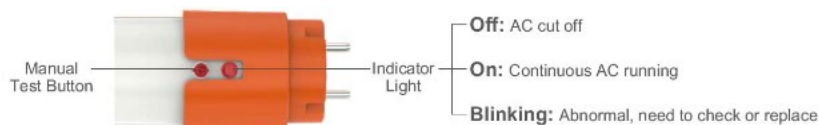
PROJECT NAME _____
ITEM # _____
FIXTURE SCHEDULE _____
NOTES _____

Order Information

Emergency LED Tube Series		Example: WL-T8-4FT-15W-EM-3CCT		
Series	Size	Wattage	Emergency Battery Backup	CCT
WL-T8	4FT 4 feet	15W 15 Watts	EM Emergency Battery Backup	3CCT 35K/40K/50K

Performance Chart

Model Number	Wattage	Lumens	Efficacy	CRI
WL-T8-4FT-15W-EM-3CCT	15W	Normal – 2,200/ Emergency - 380	133 LM/W	80

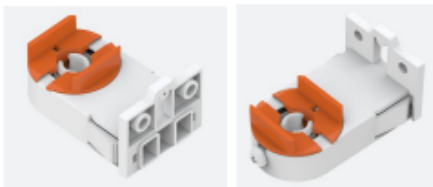


Dimensions

Item	Length	Width	Height	Weight
WL-T8-4FT-15W-EM-3CCT				

Installation Instructions

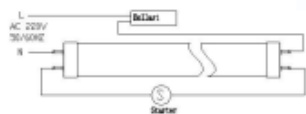
- **Step 1** Turn off the power, and take out the old fluorescent tubes.
- **Step 2** Bypass the ballast and remove starter where present.
- **Step 3** Change the original G13 lamp-socket as PVTECH special G13 lamp-socket



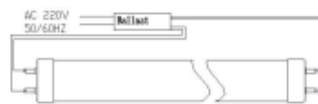
PVTECH special G13 lamp-socket

- **Step 4** Connect the wiring as the follow wiring diagram.

Modify the circuit diagram



Traditional inductance wiring schematic



Traditional electronic wiring schematic

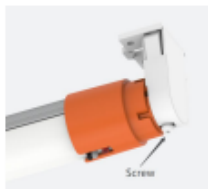


LED tube wiring schematic

- **Step 5** Switch the CCT selectable switch on the tube to the CCT that you want.
- **Step 6** Install the Emergency LED tube.



- **Step 7** Fix the screw in the special G13 lamp-socket on both side.



- **Step 8** Turn on the switch and install finish.